

INVACARE® TOP END®

Everyday Series

High Performance Wheelchair



The Invacare® Top End® Crossfire™ Titanium Wheelchair and the Invacare® Top End® Crossfire™ T6 Wheelchair are true winners that deliver Top End performance everyday.... ultra light-weight rigid custom chairs with a clean, minimalist open frame design, great looks, simple adjustments and super value. By design, The Crossfire Titanium and the Crossfire T6 wheelchairs are two of the lightest chairs on the market today. Clean lines and “just where you need them” adjustments keep them light and maintenance free. The open frame design makes getting in and out of a vehicle easier than ever, especially now with the new lock-down folding back. Let’s talk about value. The Crossfire Series comes standard with adjustable tension upholstery, high performance rear wheels, high pressure clincher tires plus semi-pneumatic front wheels.

But that is not all. The Crossfire Series offers custom frame options such as a tapered seat width and the ergonomic seat option. The tapered seat width is great for people who want the chair to taper to their body and virtually disappear. The ergo seat option can improve posture, pressure distribution and propulsion for those who use 2-4 inches of seat slope. The Crossfire Titanium and the Crossfire T6 wheelchairs are the perfect fit for anyone who wants a custom, light weight, maintenance-free chair that is built for performance.



Invacare® Top End®
Crossfire™ T6
Wheelchair

The Invacare® Top End® Terminator® Titanium and Terminator® Everyday chairs are full frame designed chairs and are perfect for extremely active or rugged lifestyles. If you want a super customized chair without all the custom upcharges or if you want the option of rear suspension, these are the chairs for you. The ergonomic seat option is something you definitely want to check out. If you need a heavy-duty chair you won't have to sacrifice either – the Terminator Series combines great design with the strongest and lightest materials to give you a super chair that fits perfectly and delivers everyday performance. Built for you – exactly the way you want it.

Invacare® Top End®
Terminator® Everyday
Wheelchair



Invacare® Top End®
Terminator® Titanium
Wheelchair





Chantal Petitclerc, Team Invacare.
The most medaled track and field
athlete in history.



1 The durable folding back locks into place creating a compact package ideal for transfers and hasty airline cargo handlers.



2 The new, no-charge mesh back upholstery offers more comfort in various climates, with soft, breathable material and cushioned inserts around the spine.



3 Folding side guards, available in aluminum or carbon fiber, work in harmony with the folding back by folding in, down or up into a compact, no-hassle package.

4 Full tire offering (left to right)

- Schwalbe® black flat resistant
- Knobby - black 25", grey 24"
- No flat solid-black
- Primo
- Pneumatic
- Pneumatic flat-free insert
- Kenda® - red or yellow



5 The back angle is adjusted simply by loosening a button-head screw and rotating an adjustment square located on the inside of this back bracket.



6 The side frame offers 4.25" of rear wheel center-of-gravity adjustment.



7 Two pressed bearings located in the fork allow for a more controlled rotation and help to eliminate flutter. **No caster caps to ever fall off again.**



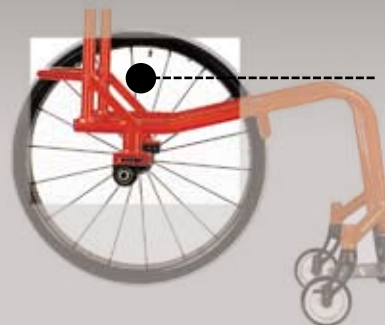
8 Each custom frame is built to accommodate a short front fork to reduce overall caster trail and keep the user's center-of-gravity low to the ground for improved balance.

Ergonomic seat option is built right into the frame.

"With the ergo seat my posture is so much better and this makes it easier to push my chair, going farther with less effort. I have been in a wheelchair for over 25 years and now finally am without back pain. I will never get another chair without an ergo seat."
Mark H. C6-7 Quadraplegic



With Ergo seat option
 Mark shown in Top End® Crossfire™ Wheelchair with Ergo Seat.



Ergonomic seat option

What is it?

- A built-in level "sweet spot"
- Promotes a neutral pelvic position

Why do I want it?

- Better posture
- Improved pressure distribution
- More efficient propulsion

Who should get it?

- End users who use 2" - 4" of "squeeze"

Without Ergo seat option

Mark shown in Top End® Terminator® Titanium Wheelchair without the Ergo Seat.



Specifications

Frame	
Width	6.75" plus seat width w/0° camber
Seat widths	12" - 20"
Seat depths	14" - 20"
Front seat-to-floor	16" - 21" (1/2" increments)
Rear seat-to-floor	14" - 21"
Axle positions	Active, Extended
Center-of-gravity range	4.25"
Front frame modifications	Tapered, V-front
Front frame angles	70°, 75°, 80°, 85°, 90°
Side & seat frame color choices	16 colors
Anodizing color options	Victory Red, Shadow Blue, Bold Black, Classic Silver

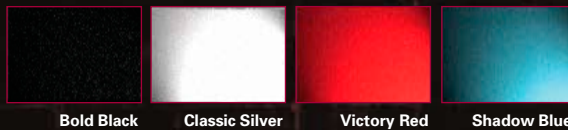
Wheels	
Wheel options	22", 24", 25", 26"
Tire options	Schwalbe®, Primo, Knobby, Kenda®, Treaded pneumatic, Pneumatic flat free, Solid no-flat
Camber choices	0°, 3°, 6°, 9°
Spinergy® wheel spoke color choices	Red, Blue, White, Yellow, Black
Caster options	3", 4", 5"
Handrim options	Silver Anodized, Natural Fit®, Titanium, Nylon Coated

Knee-to-heel* (range adjusts in 1" increments)	
16"	11.25" - 15.25"
17"	12.25" - 16.25"
18"	13.25" - 17.25"
19"	14.25" - 18.25"
20"	15.25" - 19.25"
21"	16.25" - 20.25"

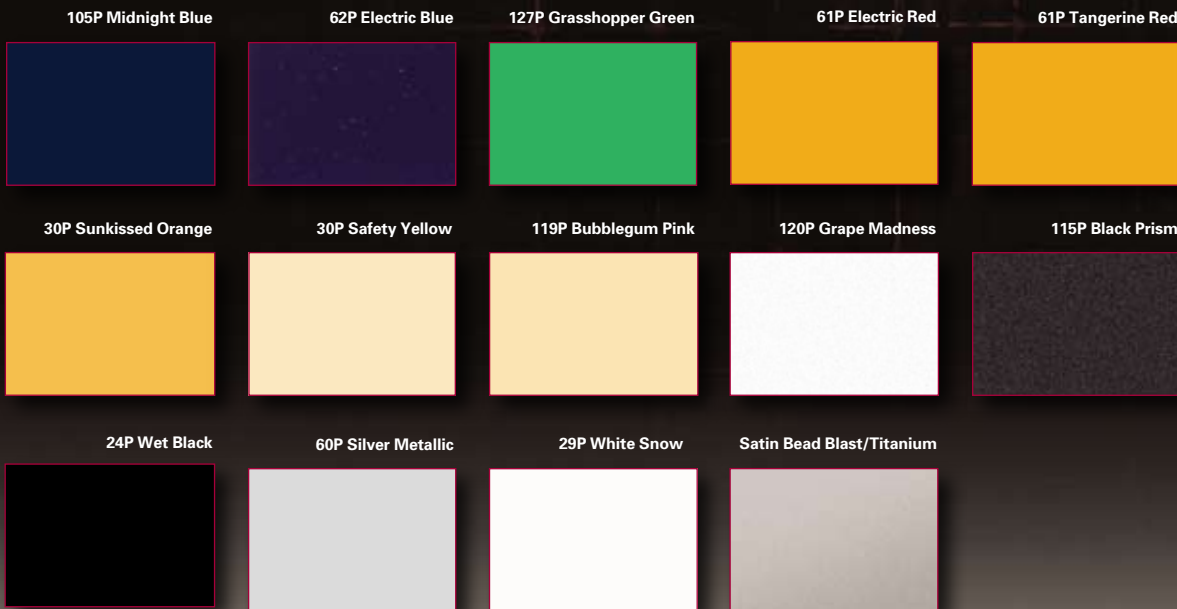
Positioning	
Arm type	Swingaway, T-Arm (Terminator only)
Back type	Folding, lock-down, angle-adj. back
Back height	9"-11", 10"-14", 12"-16", 14"-18", 16"-20"
Adjustable tension back upholstery options	Breathable mesh, Ballistic nylon, Camouflage
Side guards	Fold-in, Folding, Removable
Weight capacity	250 lb.
	Heavy-Duty option available on Terminator Series
Chair weight*	18.43 lb. for Crossfire Titanium*

*16" x 16" with 24" wheels, folding back, 4" casters and adjustable tension upholstery. See weight chart on each form for complete details.

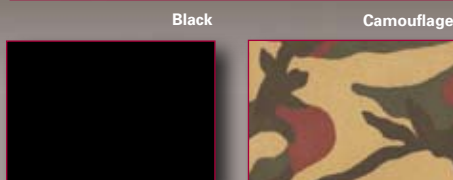
Anodizing Colors for Forks and Back Latch



Frame Colors



Upholstery Colors



Top End

www.topendwheelchair.com
Sports and Recreation Products
4501 63rd Circle North
Pinellas Park, Florida
33781-5914
(727) 522-8677
(800) 532-8677
Fax: (727) 522-1007

Invacare Corporation

www.invacare.com

USA

One Invacare Way
Elyria, Ohio
44035-4190
(800) 333-6900

Canada

570 Matheson Blvd. E.
Unit 8
Mississauga, Ontario
L4Z 4G4 Canada
(800) 668-5324

©2010 Invacare Corporation. All rights reserved. Trademarks are identified by the symbols ™ and ®. All trademarks are owned by or licensed to Invacare Corporation unless otherwise noted. Schwalbe is a registered trademark of RALF BOHLE GmbH Reichshof Germany. Sun is a registered trademark of Sun Components Inc. Natural Fit is a registered trademark of Three Rivers Holding, LLC. Spinergy is a registered trademark of Spinergy Corp. Frogs Legs is a registered trademarks of Frog Legs, Inc. Kenda is a registered trademark of Kenda Rubber Industrial Co. Ltd. Specifications and prices are subject to change without notification.

Form No. 06-005
Rev. 08/10
100416

